



# Regional SA patients disadvantaged by small town GP clinic closures

Doctors push to clear Australia's elective surgery backlog but 'exhausted' nurses want pause to continue



📷 A frontline health worker with a Covid patient at Sydney's St Vincent's hospital. Medical staff are describing the current crisis as of 'epic proportions'. Photograph: Lisa Maree Williams/Getty Images



📷 The Victorian nurses union says the suspension of elective surgery should continue to give an 'exhausted workforce' some reprieve. Photograph: Christopher Hopkins/The Guardian

Australians paying \$41 to see a GP as emergency rooms bear brunt of healthcare pressure



By [Dana Daniel](#)

February 1, 2022 — 12.01am

## 'Turn them over faster': the bleak reality inside NSW's hospitals

### What's on the table as leaders prepare to tackle Australia's rising health care costs

# Mounting crisis in Australian hospitals drives workers to quit

Martin Scott

© 6 January 2022

## Hospitals in crisis as Australian COVID-19 infections surge

Martin Scott

© 8 January 2022

Around Australia, more than 116,000 new COVID-19 infections were reported today, smashing yesterday's record high of 78,166. Per capita, the pandemic is now growing faster in Australia than in the United States.



## THREE LEVELS OF GOVERNMENT IN AUSTRALIA

### FEDERAL PARLIAMENT



- National policies
- Medicare (subsidises medical services, joint funding hospital services)
- Pharmaceuticals
- Primary health networks
- Regulates and supports access to Private health insurance
- Funds community controlled Aboriginal and Torres Strait Islander primary care

### STATE/TERRITORY PARLIAMENTS



- Manages public hospitals (joint funding)
- Preventive services (screening, immunisation)
- Community and mental health services
- Public dental clinics
- Ambulance and emergency services

### LOCAL COUNCILS



- Environmental health-related services
- Some community and home-based health and support services
- Some public health and health promotion activities

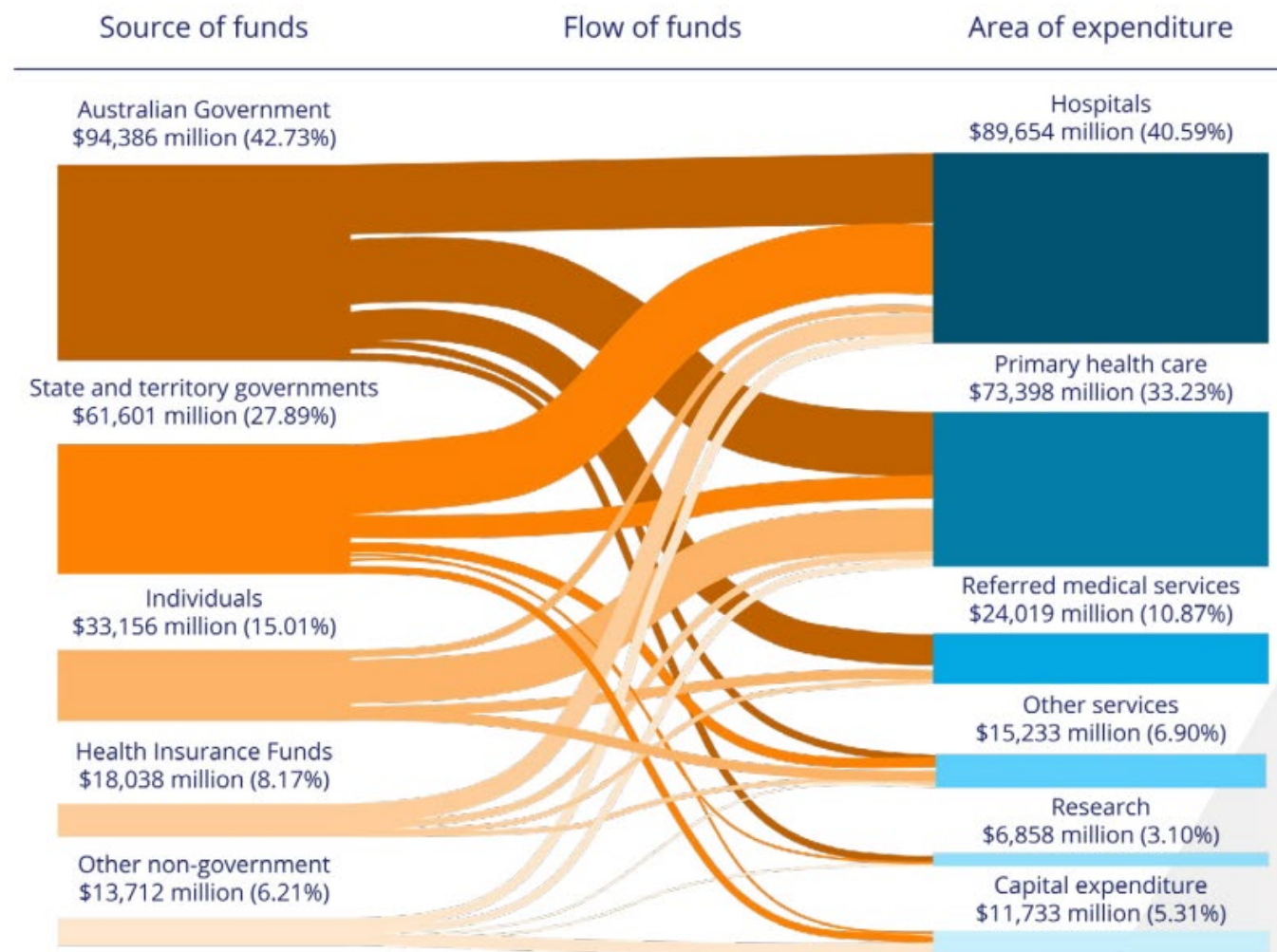
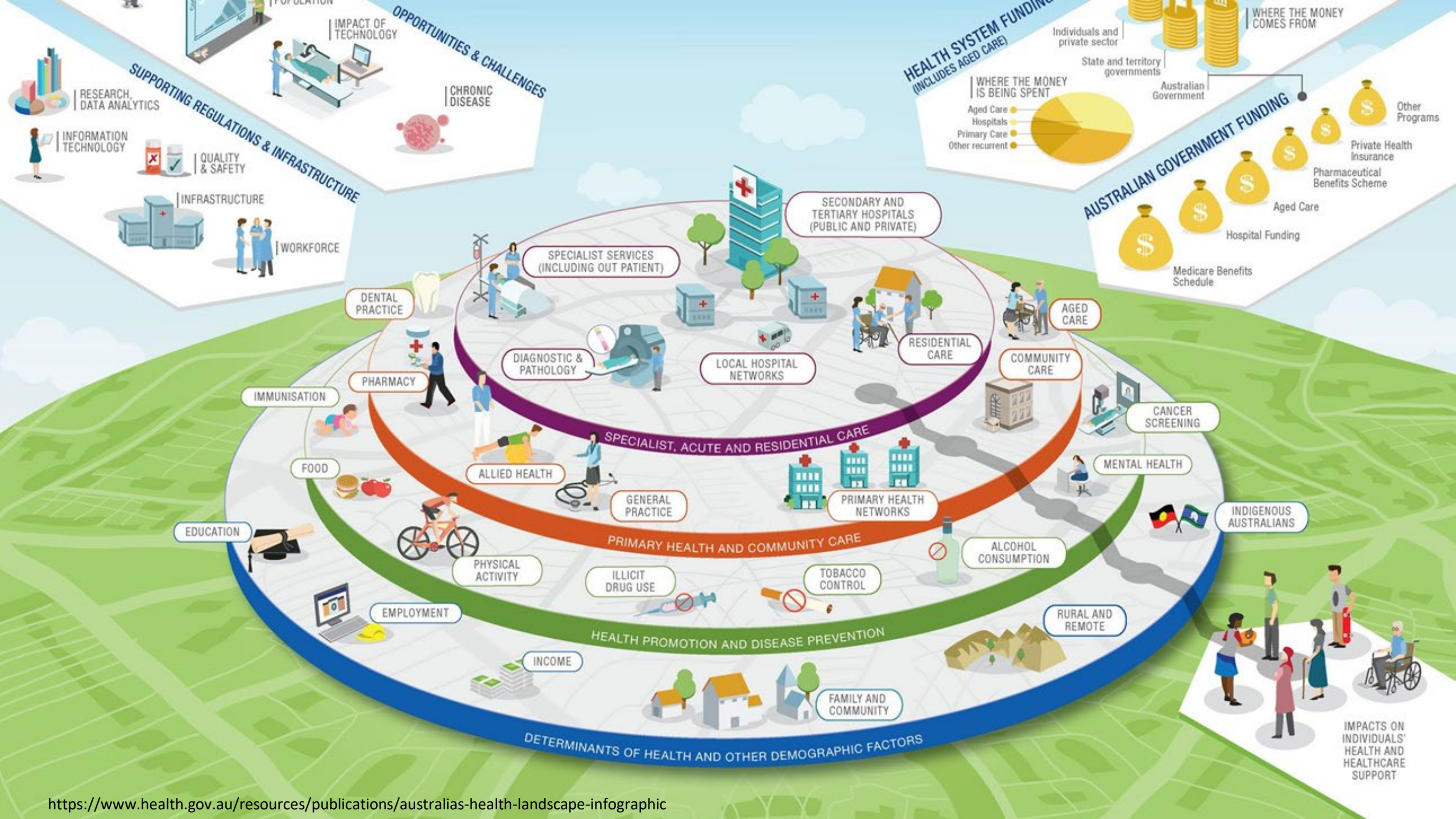


Figure 2. Broad Health Spending Flows (2020-2021) – AIHW Health Expenditure Database<sup>[6]</sup>





# Original definition of Value-Based Health Care

health outcomes that matter to people and communities

$$\text{value} = \frac{\text{outcomes + experience}}{\text{costs}}$$

costs of delivering the outcomes

→ Over the full cycle of care

*Adapted from Porter & Teisberg, 2006*



# Slow Medicine



**Definition: Value-based healthcare is the equitable, sustainable and transparent use of the available resources to achieve better outcomes and experiences for every person**

## The 4 principles of prudent healthcare



# Choosing Wisely®

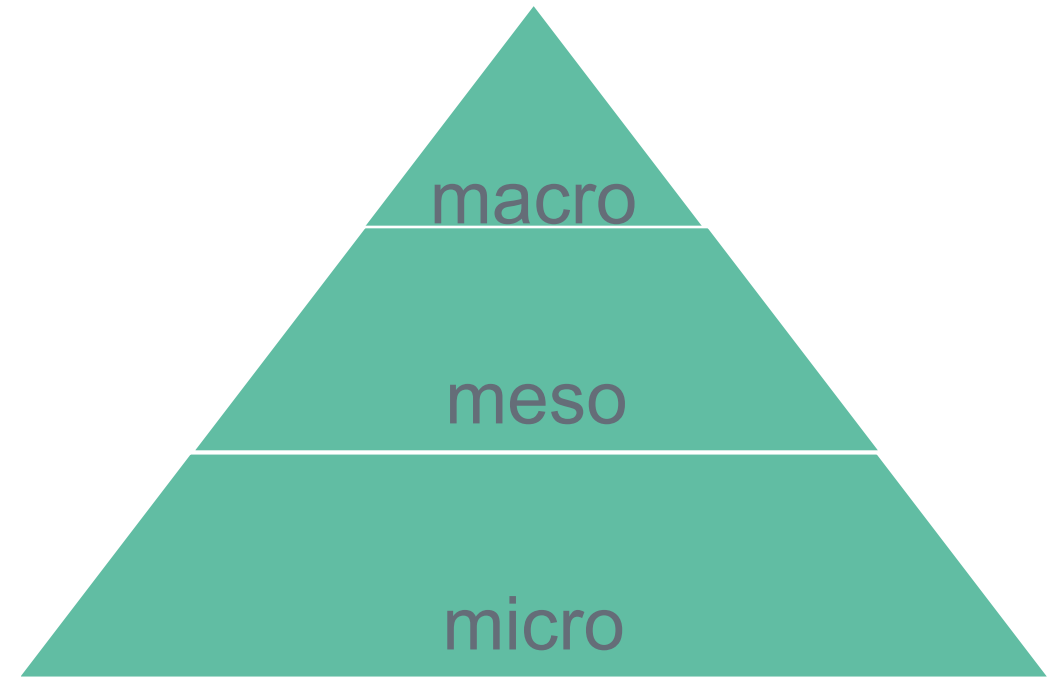
An initiative of the ABIM Foundation

- Hurst L, Mahtani K, Pluddemann A, Lewis S, Harvey K, Briggs A, Boylan A-M, Bajwa R, Haire K, Entwistle A, Handa A and Heneghan C CEBM, University of Oxford



# Population, pathways and people...

- **Population health** – prevention, social determinants
- **Processes of care** (whole pathways)
- **Supporting care of individuals**, patients as partners in their care





# Driving impact - pathway redesign

*The sum of all interventions – heart failure*



Public health risk factors, inequalities in health, improvements in acute coronary syndrome pathway



NTproBNP screening  
- Reducing unwarranted variation



- PROMs and CROMs
- Time to optimisation reduced
- Big reduction in hospital readmission rates
- (TDABC could confirm best skill mix)

Optimum positioning of implantable devices



- Joint MDT palliative care/cardiology
  - Advance care planning
  - Symptom burden
- Preferred place of care

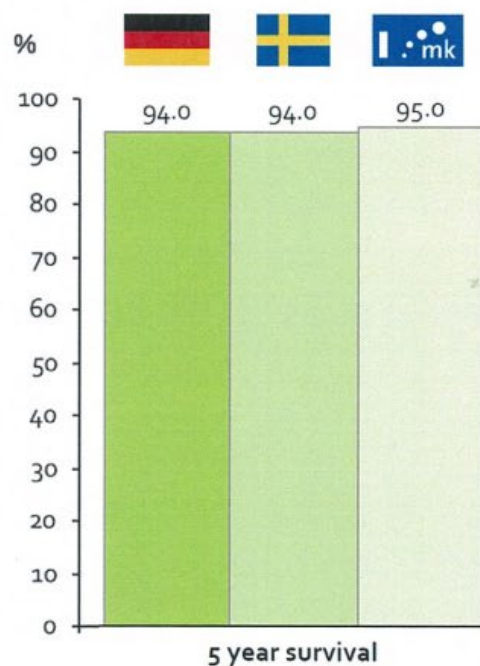


**PERSON-CENTRED CARE**

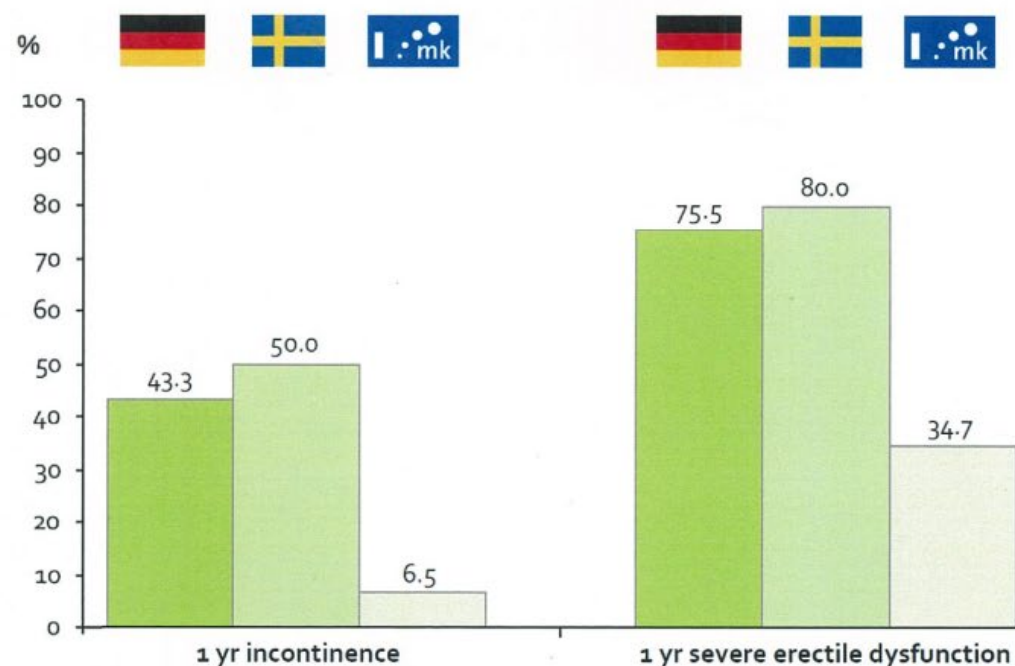
# This is why measuring and reporting meaningful outcomes matters

## Comparing outcomes of prostate cancer care

Focussing on  
mortality alone...



...may obscure large differences  
in outcomes that matter most to patients



Germany Sweden Best-in-class: Martini Klinik

Swedish data rough estimates from graphs; Source: National quality report for the year of diagnosis 2012 from the National Prostate Cancer Register (NPCR) Sweden, Martini Klinik, BARMER GEK Report Krankenhaus 2012, Patient-reported outcomes (EORTC-PSM), 1 year after treatment, 2010